

Download the APP

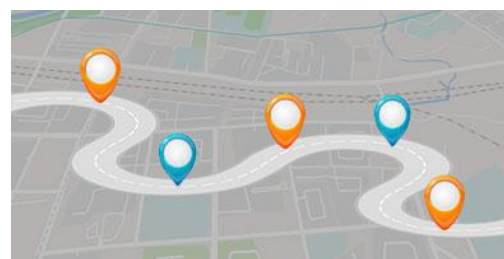


Follow us on LinkedIn

Frigga SV2

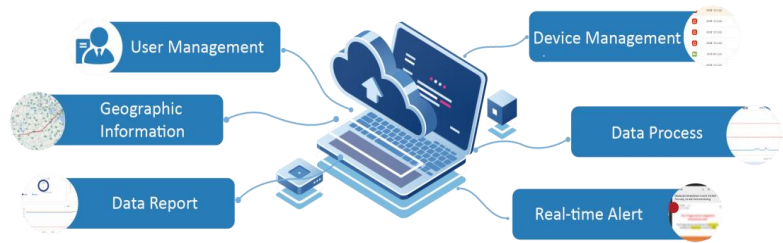
Key Features and Advantages




- **Global Active Visibility & Alerts** – active visibility for any shipment, anywhere
- **Automatic Data Upload** – 100% data capture, no plugging in required
- **True USB Replacement** – active device performance at passive device cost
- **Ultra-Slim Design** – fits any parcel, clinical shipment, or last-mile delivery
- **Real-Time Excursion Alerts** – immediate notifications for fast intervention
- **Process Automation** – remote start/stop, contactless operations, and automated workflows



*

- Support remote startup
- Customized alarms and alert notifications
- Long-term data storage
- On-site data access through a mobile phone
- Automated data analysis report
- GxP & FDA compliant
- Available on Mobile & PC



SPECIFICATIONS	SV2-B-120	SV2-E-120	SV2-G-120
Graphics			
Device Type	Single-Use		
Monitor Information	Temperature, Light, Location	Dual Temperature, Light, Location	Temperature, Light, Location
Measurement Range	-30°C to +70°C (-22°F to 158°F)	External: -40°C to +80°C (-40°F to +176°F) Internal: -30°C to +70°C (-22°F to +158°F)	-95°C to +70°C (-139°F to +158°F)
Temperature Accuracy Range	±0.5°C (-20°C to +40°C ; ±1°C for expanded range)		
Resolution	0.1°C		
Memory Capacity	Max 17, 280 readings , up to 120 days		
2 Battery Options	Lithium & Non-lithium		
Shelf-life Time	Lithium: 12 Months / Non-lithium: 6 Months		
Data Logging Interval	Default 10 Min		
Connector	Type-A USB connector		
Display	Built in LCD display, displaying temperature, signal, battery level, and alarm status		
Cold Chain PDF Report	Frigga Cloud Platform / Frigga Track (Mobile APP)		
Dimensions	Lithium: 141 * 72 * 5.5 mm / Non-lithium: 141 * 72 * 8.9 mm		
Certifications	FCC, CE, RTCA/DO-160G, IATA, ROHS, WEEE		
Storage Temperature Range	Recommended 20 to 60%RH, 0 to 25°C		